



Hilton Glasgow

1 William Street, Glasgow, G3 8HT

[0141 204 5555 \(tel:0141 204 5555\)](tel:01412045555)

[Send email \(mailto:frontoffice.glasgow@hilton.com\)](mailto:frontoffice.glasgow@hilton.com)

[Visit website \(https://www.hilton.com/en/hotels/ghlitw-hilton-glasgow\)](https://www.hilton.com/en/hotels/ghlitw-hilton-glasgow)



Access Guide

Hotel Summary

Hotel Information

[View](#)

- The hotel has its own parking facilities.
- There is a designated drop off point.
- The hotel has 322 rooms in total.
- There is an/are accessible room(s) within the hotel.
- There is/are 6 accessible room(s) with a wet room/wheel in shower.

Conference and Meeting Facilities

[View](#)

- **[For the Hilton Glasgow - Conference Facilities AccessAble access guide please click here \(new tab\) \(https://www.accessable.co.uk/hilton/access-guides/hilton-glasgow-conference-facilities\)](https://www.accessable.co.uk/hilton/access-guides/hilton-glasgow-conference-facilities)**

Spa and Leisure Facilities

[View](#)

- **[For the Hilton Glasgow - Health & Fitness Club with PURE Spa AccessAble access guide please click here \(new tab\) \(https://www.accessable.co.uk/hilton/access-guides/livingwell-health-club-hilton-glasgow\)](https://www.accessable.co.uk/hilton/access-guides/livingwell-health-club-hilton-glasgow)**

Safe Place(s)

[View](#)

- There is not a designated place of safety which can be used by people with dementia, autism or learning disabilities.

Getting Help and Assistance

- There is a Hilton Team Member available for help and assistance.
- There is not a Hilton Team Member trained in British Sign Language.
- British Sign Language interpreters can be provided on request.

Drop-Off Point / Pick Up Point

Photos



Drop-Off Point

[View](#)

- There is a designated drop-off point.
- The drop-off point is located in front of the main entrance.

Hotel Parking

Photos



Parking

[View](#)

- The car park is located off the service road for the hotel.
- There is/are 9 designated Blue Badge parking bay(s) within the car park.

Paying

[View](#)

- Parking is not free for visitors of the venue.
- Parking is not free for Blue Badge holders.
- Payment machines are located inside the building and on level 1 of the car park.

Access from the Car Park

[View](#)

- The route from the car park to the entrance is accessible to a wheelchair user unaided.

Outside Access (Main Entrance)

 Photos



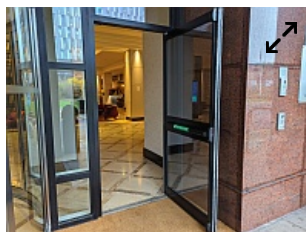
Entrance

View

- This information is for the entrance located at the front of the building.
- There is step-free access at this entrance.
- The main door(s) open(s) automatically (by revolving).
- The width of the door opening is 179cm.

Outside Access (Main Entrance - Manual Doors)

 Photos



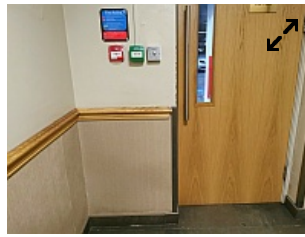
Entrance

View

- This information is for the entrance located at the front of the building, on either side of the automatic revolving door.
- There is step-free access at this entrance.
- The main door(s) open(s) towards you (pull).
- The width of the door opening is 88cm.

Outside Access (Car Park)

 Photos



Entrance

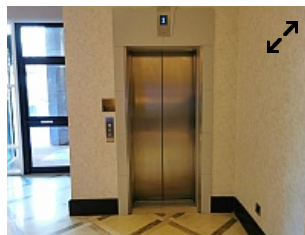
View

- This information is for the entrance located on level 1 of the car park.
- There is step-free access at this entrance.
- The main door(s) open(s) away from you (push).
- The width of the door opening is 86cm.

Lift (Car Park)



Photos

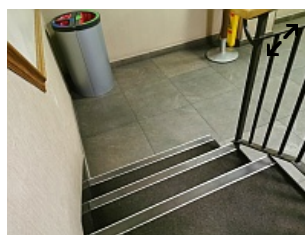


-
- The lift is located at the front of the building, to the left of the main entrance.
 - A Hilton Team Member does not need to be notified for use of the lift.
 - The floors which are accessible by this lift are -1, 1, 2, and 3.

Step(s) (Car Park)



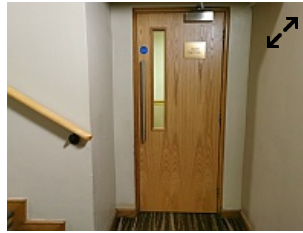
Photos



-
- There is a/are step(s) located on level 1 of the car park entrance lobby.
 - The step(s) is/are used to access the car park staircase.
 - There is/are 3 step(s).
 - There is a/are handrail(s) at the step(s).

Other Floors (Car Park - Stair 1B)

Photos



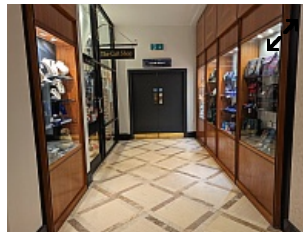
Stairs

View

- Stairs can be used to access other floors.
- The stairs are located at the rear of the car park entrance lobby.
- The floors which are accessible by stairs are -1, 1, 2, and 3.
- There are 15+ steps between floors.
- There is a/are handrail(s) at the step(s).
- The steps have a handrail on both sides.

Lobby

Photos



Circulation

View

- Seating in the lobby includes; a mixture of seats with and without armrests, bench seating and sofas.

Signage

View

- Wayfinding signage is provided.

Audio

View

- This lobby does play background music in public areas.

Reception

Photos



Reception

View

- The reception point is located to the left as you enter the building.
- There is step-free access to the reception point.
- The height of the reception counter is medium height (77cm - 109cm).
- The height of the lowered section at the counter is 76cm.
- The counter is staffed.
- There is a hearing assistance system.

Concierge Desk

Photos



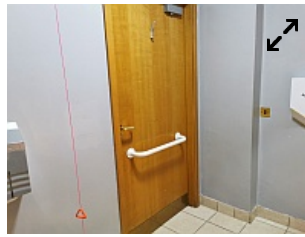
Desk

View

- The desk is located to the left as you enter.
- There is step-free access to the desk.
- The height of the desk is low (76cm or lower).
- The desk is staffed.
- There is not a hearing assistance system at the desk.

Toilet with Adaptations (Old Lobby - Right Hand Transfer)

Photos



Location and Access

View

- This accessible toilet is located on level 2, to the left as you enter via the main entrance.
- There is step-free access into the accessible toilet.
- A key is not required for the accessible toilet.
- The width of the accessible toilet opening is 87cm.

Toilet Features

View

- As you face the toilet pan the transfer space is on the right.

Additional Fixtures

View

- The wash basin tap type is lever mixer.

Baby Changing Facilities

View

- Baby changing facilities are located within the accessible toilet.

Standard Toilet(s) (Old Lobby)

Photos



Toilet Facilities

View

- The female toilet is located on level 2, to the left as you enter via the main entrance.
- An ambulant toilet cubicle is not available.

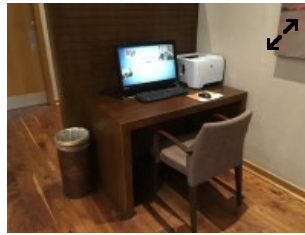
Toilet Facilities 2

View

- The male toilet is located on level 2, to the left as you enter via the main entrance.
- An ambulant toilet cubicle is not available.

Eating and Drinking (Old Executive Lounge)

Photos



Location and Access

View

- The following information is for the executive lounge.
- The executive lounge is located on level 2, to the left as you enter.

Service and Menus

View

- There is a buffet counter and a self-service counter.
- Hilton Team Members can bring food and/or drinks to tables.
- There is a hearing assistance system .

Self-Service Counter(s)

View

- The height of the counter is 90cm.

Tables and Seating

View

- There is ample room for a wheelchair user to manoeuvre.

Toilet with Adaptations (Female - Old Executive Lounge - Right Hand Transfer)

Photos



Location and Access

View

- This accessible toilet is located on level 2, in the Old Executive Lounge.

- There is step-free access into the accessible toilet.
- A key is not required for the accessible toilet.
- The width of the accessible toilet opening is 77cm.

Toilet Features

View

- As you face the toilet pan the transfer space is on the right.

Additional Fixtures

View

- The wash basin tap type is lever mixer.

Toilet with Adaptations (Male - Old Executive Lounge - Right Hand Transfer)

Photos



Location and Access

View

- This accessible toilet is located on level 2, in the Old Executive Lounge in the male standard toilets.
- There is step-free access into the accessible toilet.
- A key is not required for the accessible toilet.
- The width of the accessible toilet opening is 76cm.

Toilet Features

View

- As you face the toilet pan the transfer space is on the right.

Additional Fixtures

View

- The wash basin tap type is lever mixer.

Standard Toilet(s) (Old Executive Lounge)

Photos



- Standard toilet facilities are not available.

Toilet Facilities

View

- The female toilet is located on level 2, in the Old Executive Lounge.
- An ambulant toilet cubicle is available.

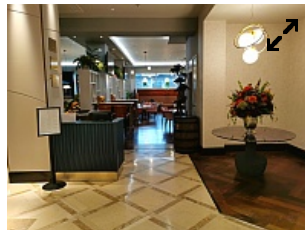
Toilet Facilities 2

View

- The male toilet is located on level 2, in the Executive Lounge.
- An ambulant toilet cubicle is available.

Eating and Drinking (Whisky Mist)

Photos



Location and Access

View

- The following information is for the restaurant/bar.
- The restaurant/bar is located on level 2, to the right as you enter adjacent to the hotel lobby.

Service and Menus

View

- There is a bar where food and drink can be ordered and table service (on request only).
- Hilton Team Members can bring food and/or drinks to tables.
- Menu types include; handheld menus, large print menus and menu boards.
- There is not a hearing assistance system .

Service Counter(s)

View

- The height of the counter is 115cm.

Tables and Seating

View

- There is ample room for a wheelchair user to manoeuvre.

Eating and Drinking (Tea Lounge by Dilmah)

Photos



Location and Access

View

- The following information is for the café.
- The café is located at the rear of the main hotel lobby.

Service and Menus

View

- There is full table service.
- Menu types include; handheld menus.
- The type of food served here is afternoon tea.
- There is not a hearing assistance system .

Tables and Seating

View

- There is ample room for a wheelchair user to manoeuvre.

Eating and Drinking (Executive Lounge)

Photos



Location and Access

View

- The following information is for the restaurant.
- The restaurant is located on level 2, to the rear of the entrance lobby.

Service and Menu

View

- There is full table service, a buffet counter and a self-service counter.
- Hilton Team Members can bring food and/or drinks to tables.
- Menu types include; handheld menus and large print menus.
- There is a hearing assistance system .

Self-Service Counter(s)

View

- The height of the counter is 85cm.

Tables and Seating

View

- There is ample room for a wheelchair user to manoeuvre.

Toilet with Adaptations (Tea Lounge - Right Hand Transfer)

Photos



Location and Access

View

- This accessible toilet is located to the right as you enter, beside the Tea Lounge.
- There is step-free access into the accessible toilet.
- A key is not required for the accessible toilet.
- The door is push pad or push button activated.
- The width of the accessible toilet opening is 86cm.

Toilet Features

View

- As you face the toilet pan the transfer space is on the right.

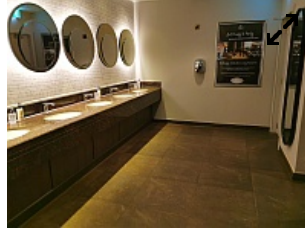
Additional Fixtures

View

- The wash basin tap type is lever mixer.

Standard Toilet(s) (Tea Lounge)

Photos



-
- Standard toilet facilities are available.

Toilet Facilities

View

- The female toilet is located to the right as you enter, beside the Tea Lounge.
- An ambulant toilet cubicle is not available.

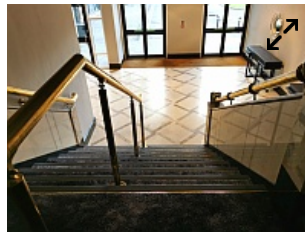
Toilet Facilities 2

View

- The male toilet is located to the right as you enter, beside the Tea Lounge.
- An ambulant toilet cubicle is not available.

Other Floors (Grand Ballroom)

Photos



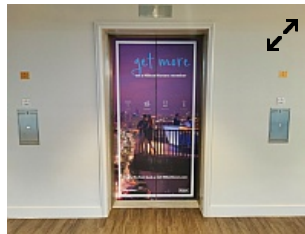
Stairs

View

- Stairs can be used to access other floors.
- The stairs are located to the left as you enter.
- The floors which are accessible by stairs are 2 and 3.
- There are 15+ steps between floors.
- There is a/are handrail(s) at the step(s).
- The steps have a handrail on both sides.

Lift (Main Lift)

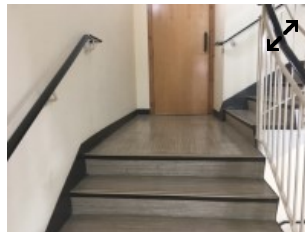
Photos



- The lift is located at the rear of the main entrance lobby.
- A Hilton Team Member does not need to be notified for use of the lift.
- The floors which are accessible by this lift are 1, 2, 3, 4, 5, 6, 7, 8, 9, 10, 11, 12, 13, 14, 15, 16, 17, 18, 19 and 20.

Other Floors (North Stair 1)

Photos



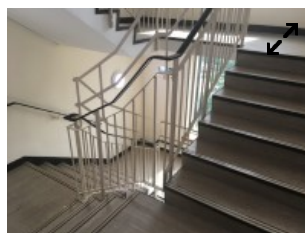
Stairs

View

- Stairs can be used to access other floors.
- The stairs are located at the front of the building, to the right as you exit the main lift well.
- The floors which are accessible by stairs are 3, 5, 6, 7, 8, 9, 10, 11, 12, 13, 14, 15, 16, 17, 18, 19 and 20.
- There are 15+ steps between floors.
- There is a/are handrail(s) at the step(s).
- The steps have a handrail on both sides.

Other Floors (South Stair 2)

Photos



Stairs

View

- Stairs can be used to access other floors.

- The stairs are located to the left as you exit the stairwell.
- The floors which are accessible by stairs are 2, 3, 5, 6, 7, 8, 9, 10, 11, 12, 13, 14, 15, 16, 17, 18, 19 and 20.
- There are 15+ steps between floors.
- There is a/are handrail(s) at the step(s).
- The steps have a handrail on both sides.

Hotel Room Corridors

Photos



Circulation

View

- There are doors in corridors/walkways which have to be opened manually.
- Seating includes; armchairs.

Safe Place(s)

View

- There is not a designated place of safety which can be used by people with dementia, autism or learning disabilities.

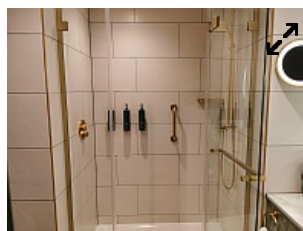
Access

View

- There is step-free access throughout the majority of the building, via lift.

Standard Room(s) (Room 815 - Level 8)

Photos



Bedroom Features

View

- The room surveyed is located on Level 8.
- There is step-free access to the room surveyed.

- The width of the door is 76cm.
- The height of the bed is 63cm.

Ensuite Facilities

View

- The type of facilities within the ensuite include; a toilet, a wash basin and a shower.
- Wall-mounted grab rails are available for the shower.

Accessible Room(s) (Room 821 - Level 8)

Photos



Accessible Room Information

View

- The details in this section relates to the accessible room(s) with a wet room/wheel in shower.
- There is step-free access to this type of accessible room.

Bedroom Features

View

- There is step-free access to the accessible room surveyed.
- The width of the door is 76cm.
- The bed height is not adjustable.
- The lighting levels in the room are moderate to good.

Ensuite Facilities

View

- The door does not have a horizontal grab rail.
- The ensuite does not have an unobstructed minimum turning space of 150cm x 150cm.
- The tap type is lever.
- The lighting levels in the ensuite are moderate to good.

Toilet Details

View

- As you face the toilet pan the transfer space is on the right.

Shower Details

View

- The ensuite has a wheel in shower.

